

By investing in the Inora **WiseGap^{2.4}**, Automotive & Aerospace Manufacturers will gain: **time savings**, **decreased scrap & rework** and **increased customer satisfaction** through improved seal gap control.

WiseGap^{2.4} Process

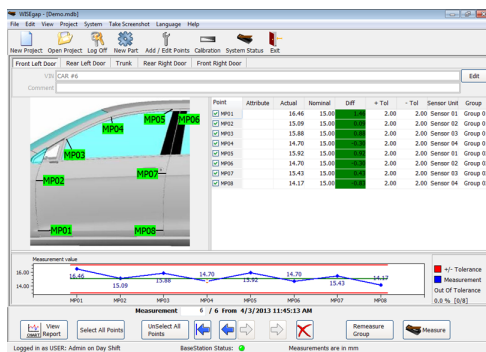


The **WiseGap^{2.4}** wireless seal gap system increases: **flexibility**, **measurement accuracy** and **saves time**. With just one system it is possible to measure the primary and/or secondary seal gap on the: door, tailgate, hood & decklid of all car models! The system can also be expanded to any number of sensors.

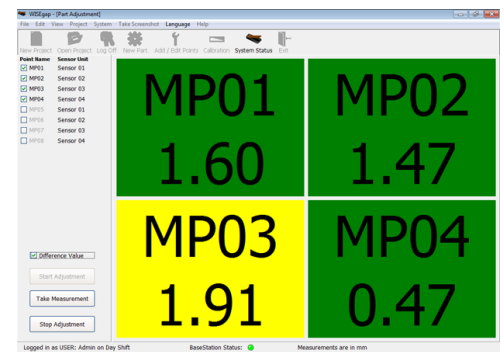
WiseGap^{2.4} is **robust** and **repeatable** and can be used in multiple areas including: R&D, pre-production, BIW, paint, quality lab, etc. and can take both static and dynamic measurements in real time.



WiseGap^{2.4} includes a calibration gauge (shown left) that is utilized in combination with a self-calibration routine in the software, providing long-term repeatability & control!



WiseGap^{2.4} Software is user-friendly with graphical feedback in all modes: part view (shown left), real-time adjustment (shown right), and highspeed dynamic. Data can then be reported or exported using the many existing & custom options.



To learn more, visit www.wisegap.com!